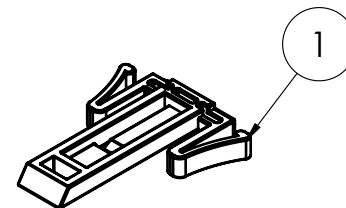
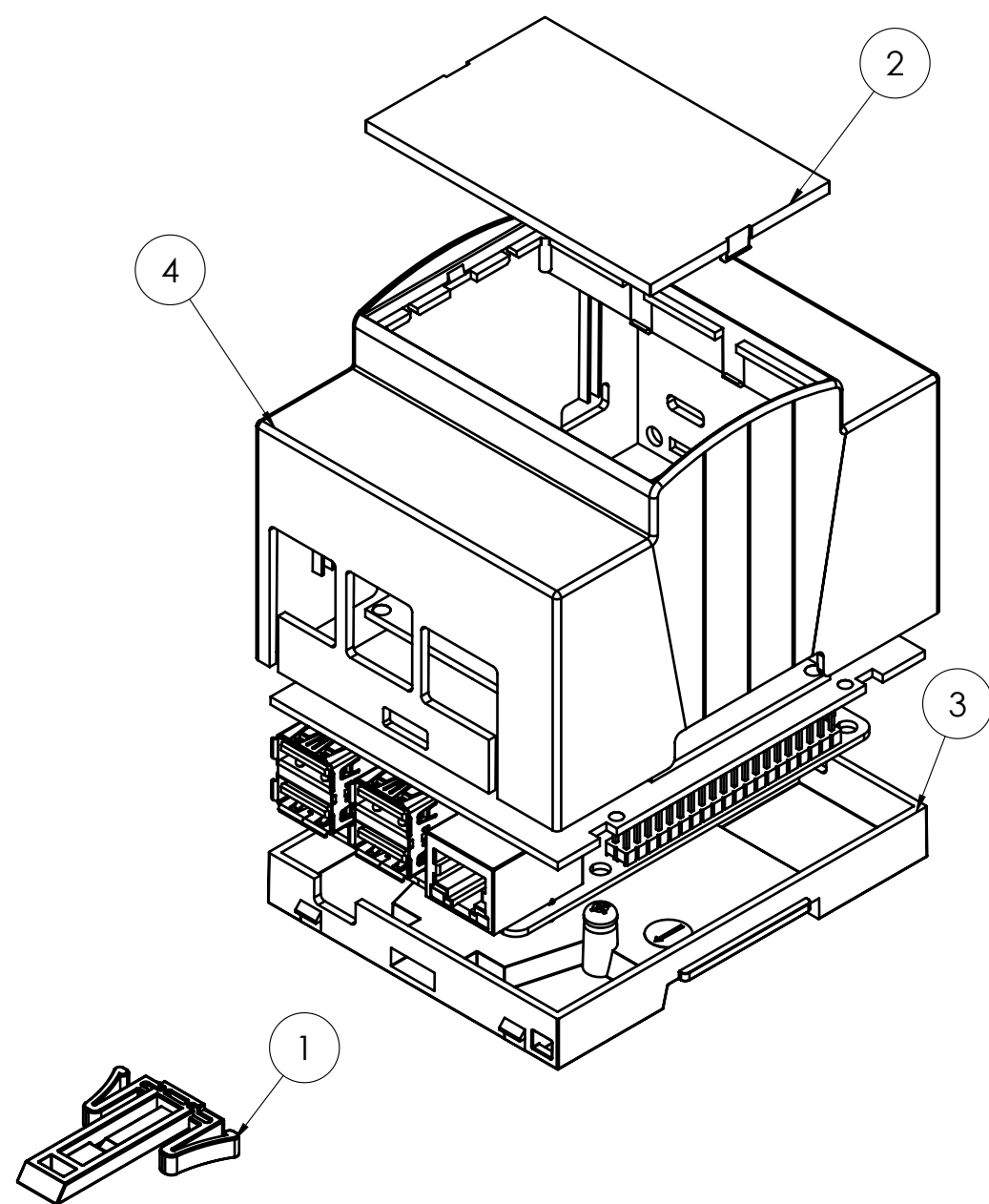
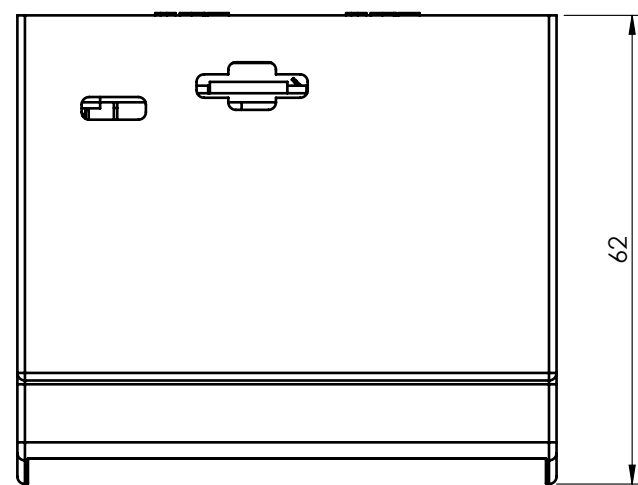
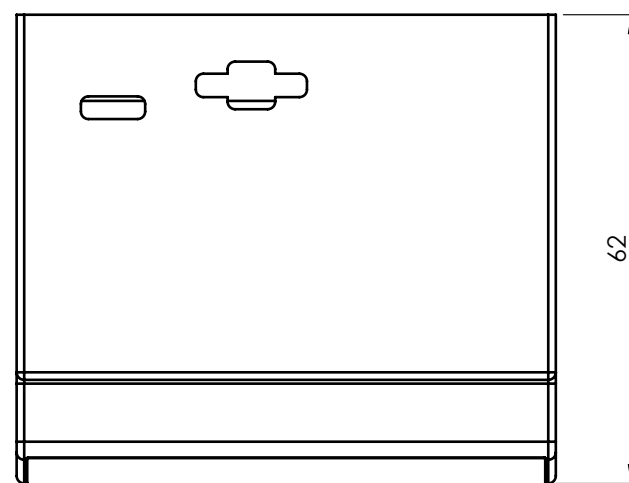
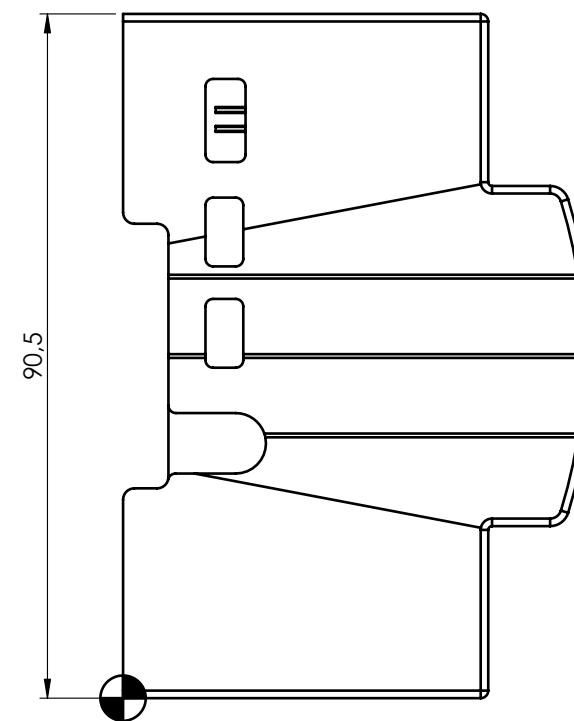
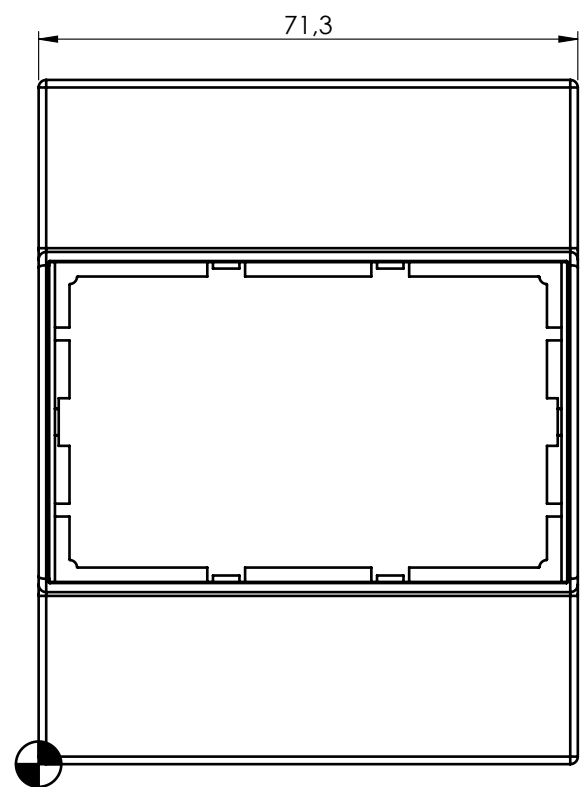


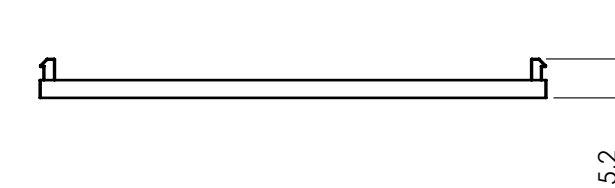
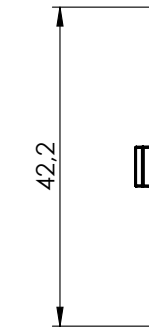
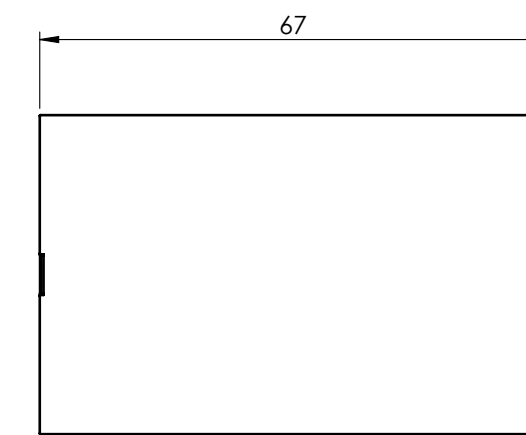
SECTION A-A



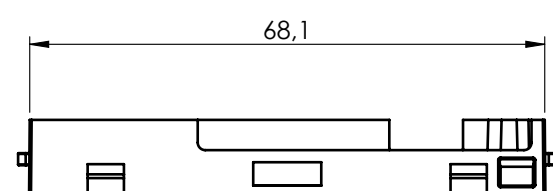
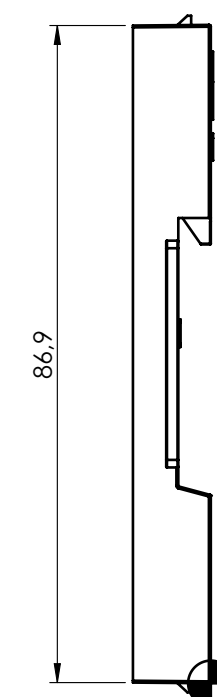
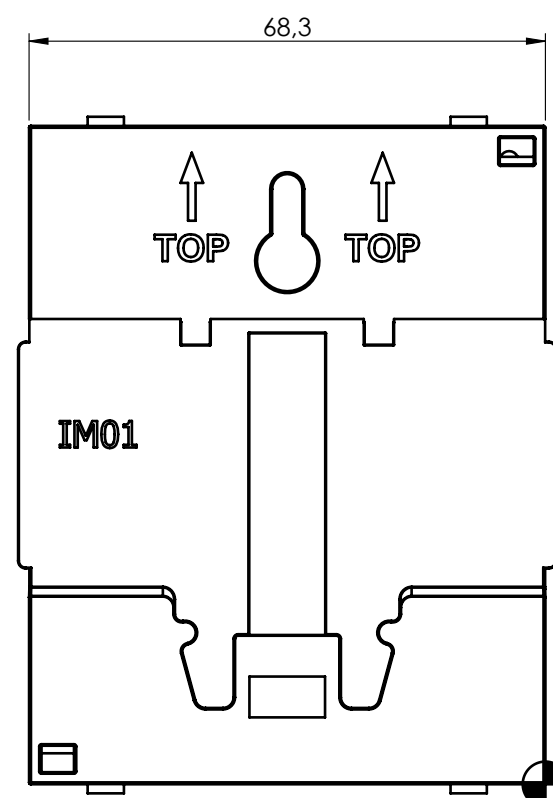
BODY ENCLOSURE



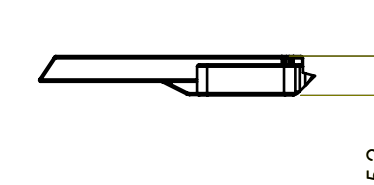
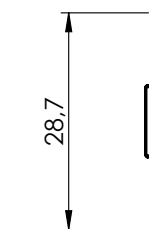
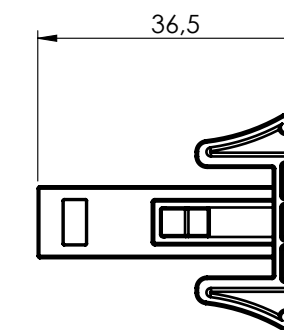
HINGED PANEL



BASE



HOOK



General information:

- Workpiece zero point for mechanical processing
- Minimum recommended radius for machining = R1.0 mm
- Mounting rail like EN 60715: TH 35-7.5 or TH 35-15
- Recommended PCB outline on [www.italtronic.com](http://www.italtronic.com)

RIF.	Q.TY	DRAWING	DESCRIPTION
1	1	2_250_00072	HOOK FOR MODULBOX XT-XTS
2	1	2_250_00088	PANEL MODULBOX WITHOUT FRAME 4M
3	1	2_050_00025	BASE MODULBOX XT-XTS 4M CON
4	1	2_050_00026	BODY ENCLOSURE 4M53-C XTS RASPBERRY PI4
5	2	8_100_00003	SCREW EN 29506 5104 TRUNK-POINT
6	1	8_010_00149	CUSTOM PRINTED CIRCUIT BOARD
7	1	8_010_00178	SCREW EN 29506 5104 TRUNK-POINT

Scale:	1:1	M.S.	R.N.	12/12/2023	Sheet:	1
Dimension in mm					Weight:	gr

		Description: KIT CONTENITORE MODULBOX XTS 4M RASPBERRY PI4B KIT CONTENITORE MODULBOX XTS 4M RASPBERRY PI4B		Rev.:	-
<a href="http://italtronic.com">italtronic.com</a>		Drawing nr.: <b>3_050_00029</b>		Cod. Mold: A2	