

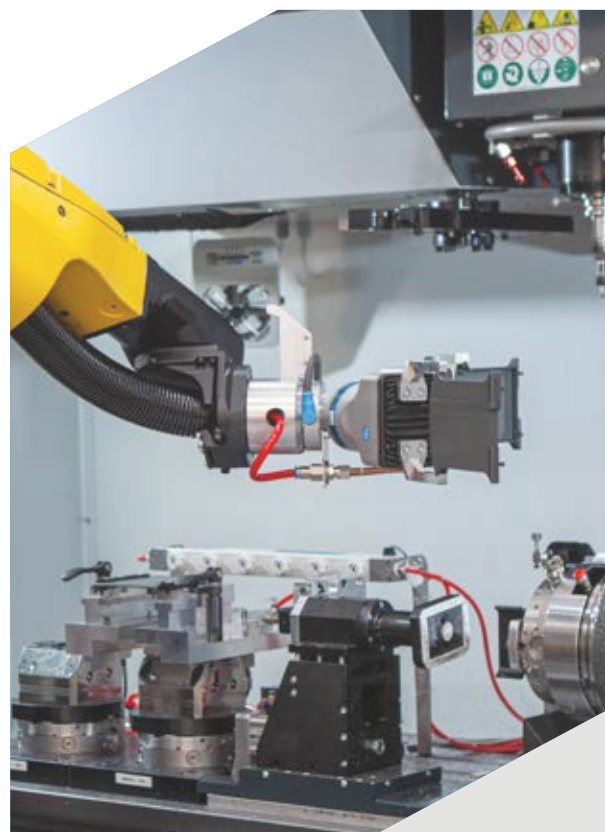
OUR WORLD OF  
ENCLOSURES

**italtronic**  
enclosures for electronics

# Experience serving your electronics

For almost 40 years, we have specialized in manufacturing enclosures for industrial electronics and smart homes, offering customizable products, **innovative solutions** and **quality** materials.

Always **Made in Italy**. This is our promise.



## Service first

With our in-house staff and the support of our selected network of partners worldwide, we offer qualified **technical and commercial assistance** throughout the process of selection, customization, and production.

The service is designed to provide our customers with **speed** of execution and **certainty of the outcome**. From free sampling to the delivery of our customized enclosures before mass production, all the information is available directly on our website, including technical drawings, including 3D, a configurator and a cost estimator for requested customizations.

---

ONLINE AVAILABILITY  
OF TECHNICAL DRAWINGS

---

FREE SAMPLING

---

RAPID PROTOTYPING

---

ONLINE CONFIGURATOR

---

ONLINE CUSTOMIZATION COST

---

E-COMMERCE

---

TECHNICAL SUPPORT

---

*Fast*TRONIC SERVICE

---

# Customization

## AESTHETICS

The creativity applied to our enclosures is limitless. We assist our customers in tailoring their products, leveraging our expertise and dedicated service.

For us, creativity goes beyond mere aesthetics and emphasizes **functionality**: we devote our creative skills to our customers' projects. We employ a UV-cured, four-color digital inkjet **printing process** that enables photographic-quality results and maximum **flexibility** even for small batches.

With an **automated laser printing system**, we customize multiple sides of the enclosure simultaneously during the production cycle, resulting in significant **time and cost savings**.



Multicolor digital printing



Laser printing



Single-color pad printing



Painting



Laser printing of incremental QR codes/barcodes and serial numbers

## MECHANICS

Starting from a wide range of standard enclosures, we perform precision **mechanical processes** using technologically advanced automation to customize the product according to individual needs. This ensures maximum precision and reliability for each **customization**.

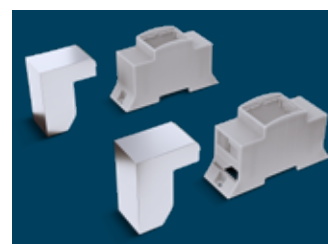
Additionally, thanks to the versatility of our molds, we offer the possibility of **customizing openings** by modifying only the relevant part of the mold, thus **saving** costs associated with CNC machining and limiting investments.



CNC machining



Engineering



Mold development and modification

# Enclosures for rail DIN application

## Modulbox<sup>line</sup>

DIN Rail (EN 60715) mounting enclosures for electronic products according to DIN 43880.



**Modulbox XTS**



**Modulbox XTS DD**



**Modulbox XT**



**Modulbox One**

## Railbox<sup>line</sup>

DIN rail (EN 60715) mounting enclosures to house electronic printed circuit boards.



With new DEM Bus

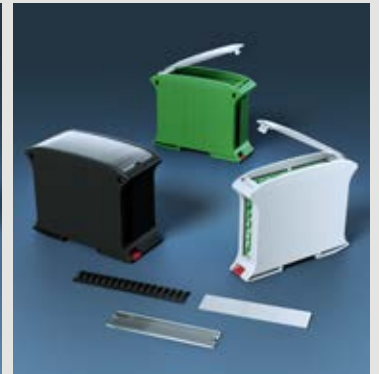
**Railbox XT**



**Railbox Vertical  
e Multilevel**



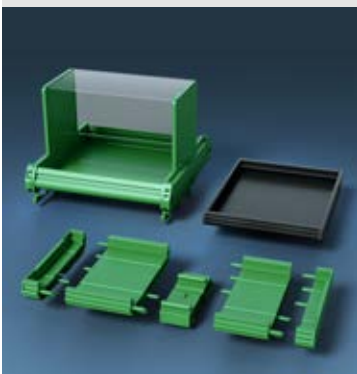
**Railbox Closed**



**Railbox Compact  
Vertical**

## Support<sup>line</sup>

Din rail (EN 60715) mounting modular supports for electronic printed circuit boards.



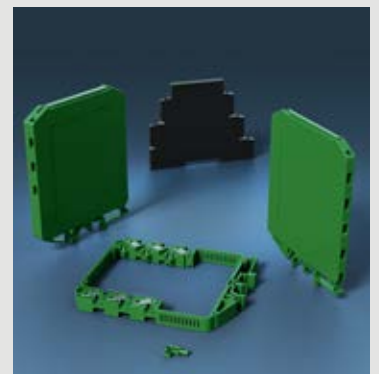
**Support One**



**Support XT**

## Guidebox<sup>line</sup>

DIN rail (EN 60715) mounting enclosures with integrated terminals.



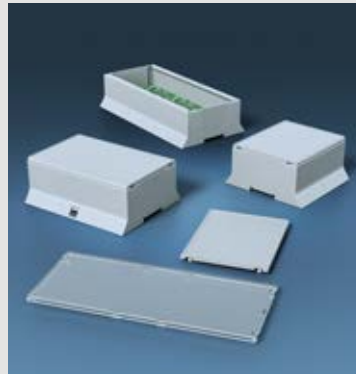
**Guidebox**



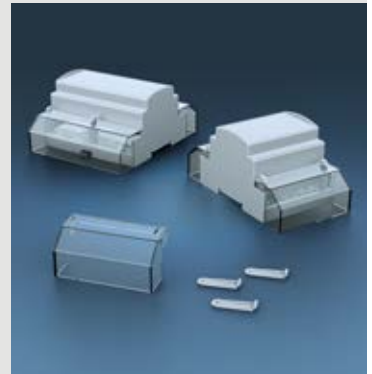
**Modulbox Spacer**



**Modulbox XTS Compact**



**Modulbox XT PLC**



**Modulbox Special**

## Embedded box<sup>line</sup>

DIN rail (EN 60715) mounting enclosures for embedded board.



**Embedded box**

## Latusbox<sup>line</sup>

Modular system for FIELD BUS, DIN Rail mounting (EN 60715).



**Latusbox**

We are internationally renowned for offering the widest range of **plastic enclosures for rail DIN applications** and **industrial panel mounting**.

**+ 1200 STANDARD ENCLOSURES**



**Access the entire product range on the website**

# Wall mounting and home automation

## iTouch<sup>line</sup>

Enclosures for Home & Building Automation, wall mounting, for display max 4.3".



iTouch

## Eyebox<sup>line</sup>

Round Enclosures for Home & Building Automation, wall mounting, for display max 2.8".



Eyebox Simple



Eyebox

## DomoPi 7<sup>line</sup>

Enclosures for Home & Building Automation, wall mounting, for display max 7".



DomoPi 7

## Thermo<sup>line</sup>

Enclosures for Home & Building Automation, wall mounting.



Thermo

## iGlass<sup>line</sup>

Enclosures for Home & Building Automation, wall mounting.



iGlass

## Cbox<sup>line</sup>

Enclosures for Home & Building Automation for wall-mounting and electrical back boxes.



Cbox Universal

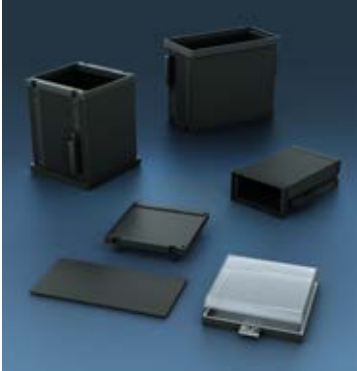


Cbox Int

# Panel mounting enclosures

## Incabox<sup>line</sup>

Panel mounting enclosures for electronic products according to IEC 61554 (ex DIN 43700).



Incabox One



Incabox XT



Incabox XTS

# Enclosures for Resin and Guide

## Resin<sup>line</sup>

Enclosures for electronic equipment.



Resin

## Guide<sup>line</sup>

Enclosures with sockets for 8 (octal) or 11 pins (undecal) connections for electronic products.



Guide

Our product range stands out for its quality and the variety of available versions, which include solutions specifically designed for the measurement and control in the field of **Home and Building Automation**, as well as for the **Embedded board market**.

## Certifications



# Excellence comes first

In an increasingly fast-paced market, we keep up. The latest innovation is **FastTronic**, a "time saving" service to receive our enclosures, complete with graphic and mechanical customizations, with fast and guaranteed delivery in just six days from the order.

**High-speed customization.**

For more information  
scan the QR code:



## **Italtronic S.r.l.**

Corso Stati Uniti, 17  
35127 · PD · ITALY  
**Phone** +39 049 8947150

### **Information and sales:**

export@italtronic.com

### **Technical department:**

techcare@italtronic.com

[www.italtronic.com](http://www.italtronic.com)

Follow us:    